



PRODUCT CATALOGUE



care. comfort. competence.

Safeco Hygiene Films Private Limited

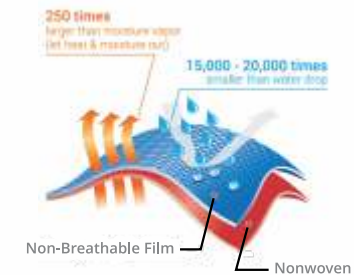
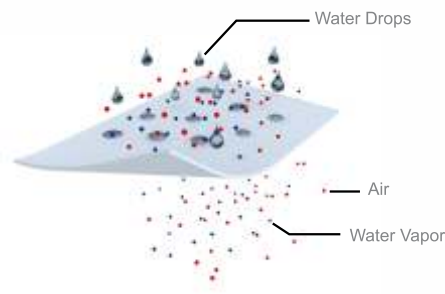
708, Manjusar GIDC, Vadodara (Gujarat) 391 775 India | +91 9687634716 | info@safecohygiene.com | www.safecohygiene.com



BREATHABLE FILM

Features

- Micro porous films that is waterproof but enables air and humidity to pass through
- Effectively restricts liquid flow
- Superior soft touch and non-plastic texture
- Option of micro and macro embossing



LAMINATED FILM WITH NON-WOVEN FABRIC

Features

- Combines the characteristics of the ordinary cast film and non-woven fabric
- Improved aesthetics, gives cloth-like feel, and scope for practical application
- Excellent puncture and cracking resistance

Customisation Options

- On customer’s request very low to high breathability level available
- Anti-microbial treatment option
- Lamination with various types of non-woven textiles (standard, high softness, materials with various absorption capacities etc.)
- Option for partial or full lamination

Printing Options

- CI Flexographic print up to 6 colour
- Print multiple artwork repeats in one roll
- Registered print, random print
- Maximum print width of 1175 mm
- Registered reverse print for wetness indicator



TECHNICAL DATA SHEET

No.	Technical Data Sheet for Breathable Film			Breathable Cloth Like Outer Cover	Breathable Film	
	Properties	Unit	Test Method / Limit	For Baby Diaper	For Baby Diaper	For Sanitary Napkins & Panty Liners
1	Basis Weight	g/m ²	± 1gsm	28 gsm (min)	13 gsm (min)	28 - 32 gsm
2	Slit Width	mm	± 2mm	50mm to 2,100mm as specified by the customer	50mm to 2,100mm as specified by the customer	50mm to 2,100mm as specified by the customer
3	Lamination	-	-	Full or Partial Lamination	-	-
4	Load at Peak	MD g/inch	ASTM D 882	≥ 1800	≥ 900	≥ 1600
		CD g/inch	ASTM D 882	≥ 650	≥ 150	≥ 350
5	Elongation at Peak	MD %	ASTM D 882	≥ 40 (25% stretch)	≥ 60 (25% stretch)	≥ 660 (10% elongation)
		CD %	ASTM D 882	≥ 50 (25% stretch)	≥ 90 (25% stretch)	≥ 270 (10% elongation)
6	Lamination Strength	MD g/inch	-	≥ 55	-	-
		CD g/inch	-	≥ 45	-	-
7	Surface Tension	dyne	ASTM D 2578	36-40	34 - 38	36 - 40
8	Hydrohead Pressure	mbar	-	≥ 60	≥ 40	-
9	WVTR	gsm/24hrs	ASTM E96-90	4000 ± 500 (3500 - 4500)	4000 -500, + 1000 (3500 - 5000)	1500 ± 500 (1000 - 2000)
10	Printing	-	-	Up to 6 colours with reverse printing	Up to 6 colours with reverse printing	Up to 6 colours with reverse printing
11	Film Color	-	-	According to the customer's desired color & shade	According to the customer's desired color & shade	According to the customer's desired color & shade
12	Repeated printed MD length	mm	-	-3, + 2mm	-3, + 2mm	-3, + 2mm
13	Roll Diameter	mm	-	650 max	650 max	650 max
14	Roll Linear Length	meter	-	4,000 m -30, + 30 m (max)	8,500 ± 70m (max)	3,500 - 5,000 m

APPLICATIONS



Baby Care



Fem Care



Adult Care



PRODUCT CATALOGUE



care. comfort. competence.

Safeco Hygiene Films Private Limited

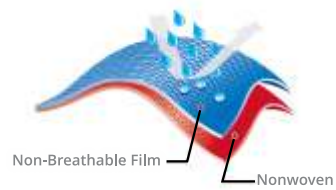
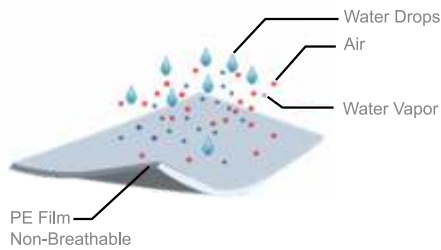
708, Manjusar GIDC, Vadodara (Gujarat) 391 775 India | +91 9687634716 | info@safecohygiene.com | www.safecohygiene.com



NON-BREATHABLE FILM

Features

- Non porous structure that restricts flow of liquid, air and vapour
- Option of micro and macro embossing
- Provision for online lamination with non-woven fabric



LAMINATED NON-BREATHABLE FILM

Features

- Complete barrier against liquid, vapor & air flow
- Softness imparted with high runnability
- Produced from CAST technology
- High mechanical properties makes it durable and reliable
- Low thickness leading to cost saving
- Cost saving & sustainability benefits

Customisation Options

- Combines the characteristics of the cast film and non-woven fabric
- Improved aesthetics, gives cloth-like feel, and scope for practical application
- Excellent puncture and cracking resistance

Printing Options

- CI Flexographic print up to 6 colour
- Print multiple artwork repeats in one roll
- Registered print, random print
- Maximum print width of 1175 mm
- Registered reverse print for wetness indicator



TECHNICAL DATA SHEET

No.	Technical Data Sheet for Non-Breathable Film			Non-Breathable Cloth Like Outer Cover	Non-Breathable Film	
	Properties	Unit	Test Method / Limit	For Baby Diaper	For Baby Diaper	For Sanitary Napkins & Panty Liners
1	Basis Weight	g/m ²	± 1gsm	20 gsm (min)	10 gsm (min)	15 gsm (min)
2	Slit Width	mm	± 2mm	50mm to 2,100mm as specified by the customer	50mm to 2,100mm as specified by the customer	50mm to 2,100mm as specified by the customer
3	Lamination	-	-	Full or Partial Lamination	-	-
4	Load at Peak	MD g/inch	ASTM D 882	≥ 1800	≥ 765	≥ 950
		CD g/inch	ASTM D 882	≥ 650	≥ 612	≥ 665
5	Elongation at Peak	MD %	ASTM D 882	≥ 40 (25% stretch)	≥ 255 (5% stretch), ≥ 305 (10% stretch)	≥ 143 (25% stretch)
		CD %	ASTM D 882	≥ 50 (25% stretch)	≥ 235 (5% stretch), ≥ 255 (10% stretch)	≥ 333 (25% stretch)
6	Lamination Strength	MD g/inch	-	≥ 65	-	-
		CD g/inch	-	≥ 45	-	-
7	Surface Tension	dyne	ASTM D 2578	36-40	36-42	36 · 40
8	Hydrohead Pressure	mbar	-	≥ 70	≥ 50	≥ 50
9	Printing	-	-	Up to 6 colours with reverse printing	Up to 6 colours with reverse printing	Up to 6 colours with reverse printing
10	Film Color	-	-	According to the customer's desired color & shade	According to the customer's desired color & shade	According to the customer's desired color & shade
11	Repeated printed MD length	mm	-	-3, +2mm	-3, +2mm	-3, +2mm
12	Roll Diameter	mm	-	650 max	650 max	650 max
13	Roll Linear Length	meter	-	4,000 m -30, +30 m (max)	8,500 ± 70m (max)	3,500 · 5,000 m

APPLICATIONS



Baby Care



Fem Care



Adult Care



PRODUCT CATALOGUE



care. comfort. competence.

Safeco Hygiene Films Private Limited

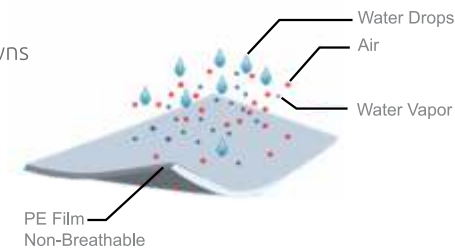
708, Manjusar GIDC, Vadodara (Gujarat) 391 775 India | +91 9687634716 | info@safecohygiene.com | www.safecohygiene.com



NON-BREATHABLE MEDICAL FILM

Features

- Specifically designed for medical drapes & gowns
- Non porous structure that restricts flow of liquid, air and vapour
- Option of micro and macro embossing
- Provision for online lamination with non-woven fabric



LAMINATED WITH NON WOVEN

Features

- Complete barrier against liquid, vapor & air flow
- Softness imparted with high runnability
- Produced from CAST technology
- High mechanical properties makes it durable and reliable
- Low thickness leading to cost saving
- Cost saving & sustainability benefits



Customisation Options

- Available in variety of colors such as blue, green, etc.
- Combines the characteristics of the cast film and non-woven fabric
- Improved aesthetics, gives cloth-like feel, and scope for practical application
- Excellent puncture and cracking resistance
- Available in widths upto 2200mm

Printing Options

- CI Flexographic print up to 6 colour
- Registered print, random print



TECHNICAL DATA SHEET

No.	Technical Data Sheet for Non-Breathable Film			Non-Breathable Medical Film	
	Properties		Unit	Test Method / Limit	For Drapes & Gowns
1	Basis Weight		g/m ²	± 1gsm	20 gsm
2	Slit Width		mm	± 2mm	50mm to 2,200mm as specified by the customer
3	Lamination		-	-	Full or Partial Lamination
4	Load at Peak	MD	gf/inch	ASTM D 882	≥ 1900
		CD	gf/inch	ASTM D 882	≥ 750
5	Elongation at Peak	MD	%	ASTM D 882	≥ 40 (25% stretch)
		CD	%	ASTM D 882	≥ 50 (25% stretch)
6	Lamination Strength	MD	gf/inch	-	≥ 55
		CD	gf/inch	-	≥ 45
7	Surface Tension		dyne	ASTM D 2578	36-40
8	Hydrohead Pressure		mbar	-	≥ 70
9	Printing		-	-	Up to 6 colours with reverse printing
10	Film Color		-	-	According to the customer's desired color & shade
11	Repeated printed MD length		mm		-3, + 2mm
12	Roll Diameter		mm	-	650 max
13	Roll Linear Length		meter	-	4,000 m -30, + 30 m (max)

APPLICATIONS



Under Pads



Shoe Covers



Face Mask



Medical Drapes & Gowns



PRODUCT CATALOGUE



care. comfort. competence.

Safeco Hygiene Films Private Limited

708, Manjusar GIDC, Vadodara (Gujarat) 391 775 India | +91 9687634716 | info@safecohygiene.com | www.safecohygiene.com



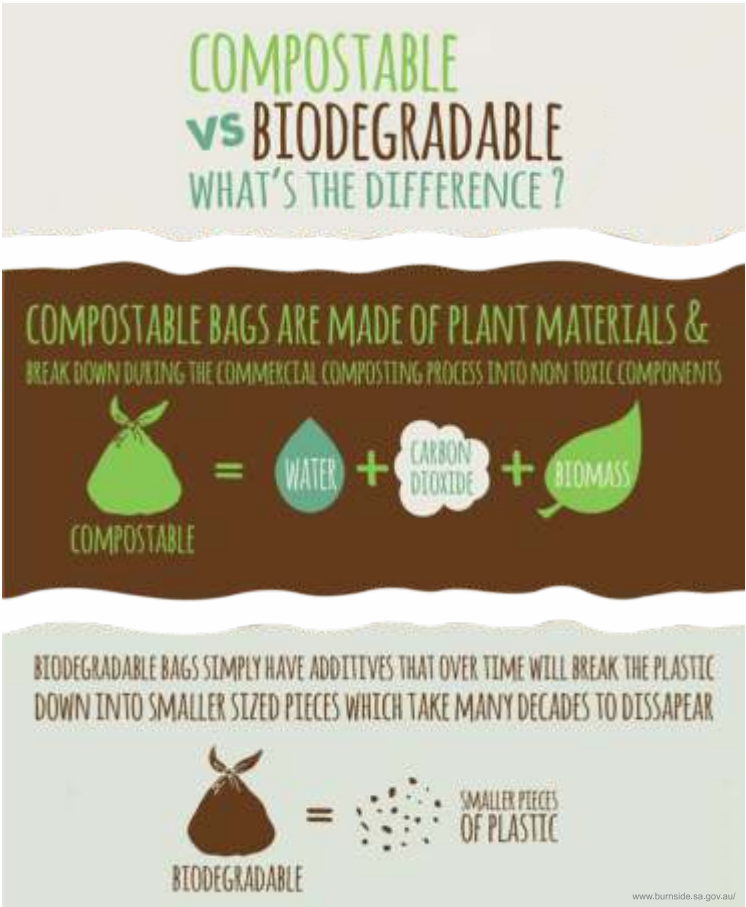
PLA (POLY LACTIC ACID) COMPOSTABLE FILM

Features

- 100% environmental-friendly raw material
- PLA approved by U.S. FDA for direct food contact
- Meets regulations of ROHS, REACH and OK COMPOST
- Superior mechanical properties and film tenacity
- Easily laminated with plastic or paper

Customisation Options

- Can be made available in various thicknesses and gsm's
- Upto 6 colour registered printing
- Various colour options available
- Other mechanical properties can be customized to customer's requirement



TECHNICAL DATA SHEET

No.	Technical Data Sheet for PLA Compostable Film			PLA Compostable Film	
	Properties		Unit	Test Method / Limit	For Diapers and Napkins
1	Basis Weight		g/m ²	± 1gsm	20 gsm
2	Slit Width		mm	± 2mm	50mm to 2,100mm as specified by the customer
3	Lamination		-	-	Full or Partial Lamination
4	Load at Peak	MD	gf/inch	ASTM D 882	≥ 750
		CD	gf/inch	ASTM D 882	≥ 500
5	Elongation at Peak	MD	%	ASTM D 882	≥ 40 (25% stretch)
		CD	%	ASTM D 882	≥ 50 (25% stretch)
6	Lamination Strength	MD	gf/inch	-	≥ 55
		CD	gf/inch	-	≥ 45
7	Surface Tension		dyne	ASTM D 2578	36-40
8	Hydrohead Pressure		mbar	-	≥ 70
9	Printing		-	-	Up to 6 colors with reverse printing
10	Film Color		-	-	According to the customer's desired color & shade
11	Repeated printed MD length		mm	-	-3, +2mm
12	Roll Diameter		mm	-	650 max
13	Roll Linear Length		meter	-	4,000 m -30, + 30 m (max)

APPLICATIONS



Baby Care



Fem Care



Adult Care



PRODUCT CATALOGUE



care. comfort. competence.

Safeco Hygiene Films Private Limited

708, Manjusar GIDC, Vadodara (Gujarat) 391 775 India | +91 9687634716 | info@safecohygiene.com | www.safecohygiene.com



SILICONE COATED RELEASE PAPER & FILMS

Features

- Platinum cured silicone coated release paper/film
- 5 roll coating technology assures uniform coating
- Solvent less coating assures no contamination & safety concerns
- In-line one colour printing
- Can coat both paper & film
- High speed machine for cost effectiveness & efficiency
- Designed for hygiene product application



Customisation Options

- Available in paper and film for quick wrap application
- Up to 6 color printing on reverse side
- Release force based on customers requirement
- Minimum 28 gsm for paper and 20 gsm for film



Release Film



Release Paper

TECHNICAL DATA SHEET

Description		Test Method	Typical Values	
Type of Product		-	Release PE Pouch	Release Paper
Color & Printing Colours		-	White 1C Printed	White 1C Printed
Basis Weight (g/m2)		-	22	29
Release Force (g)		ASTM	25	30
Tensile Strength (gf/inch)	MD	ASTM D882	1100	-
	CD		750	-
Elongation %	MD	ASTM D882	300	-
	CD		500	-
Thickness (microns)		-	30	30

APPLICATIONS



Quick Wrap Film



Wing & Back Release For Sanitary Napkins



Back Release For Nappy Pads